

ValvKeep® Customer Benefits

- Central database for all pressure relief devices and process control valves of any manufacturer
- Robust data storage for detailed cradle-to-grave records of complete equipment
- Complete visibility into the repair process start to finish
- Ready to use reports and analysis tools for predictive and preventive maintenance planning
- Effective planning tools for ongoing maintenance requirements
- Built-in sorting and filtering for easy record retrieval
- Ready compliance with OSHA 1910 Process Safety Management (PSM) requirements
- Capability to capture application, location, and association of equipment
- Importable and exportable data makes it ready to use with other software applications
- Pre-loaded database of many Consolidated and Masoneilan models with the capability to store other valve manufacturers' data
- Available in Field Level Protected version which allows field-by-field read/write access control of users
- Fully multi-user and networkable



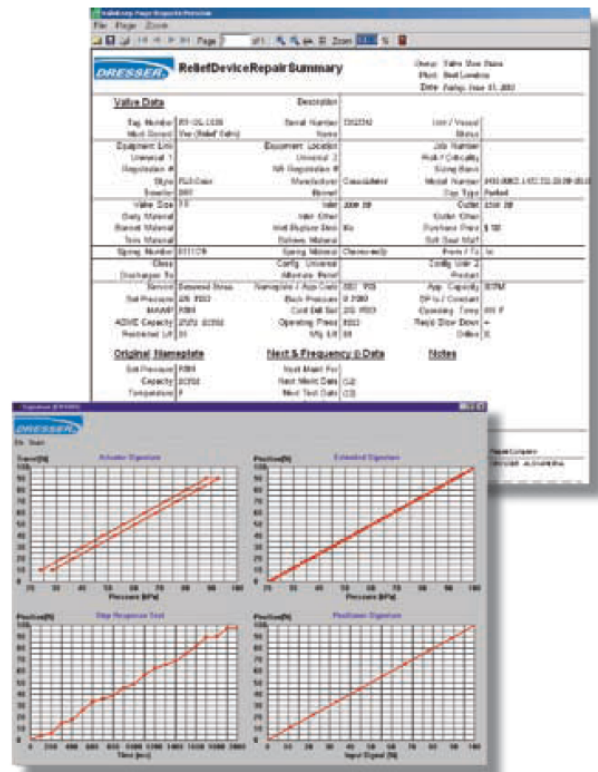
Simplifies Maintenance Data Management Process Using a Centralized Database

- Calculates future maintenance schedules
- Tracks and estimates maintenance costs
- Assists in trouble-shooting by tracking maintenance trends
- Reduces time to repair
- Standard and customizable reports and views by valve, unit, plant or any desired grouping
- Access to ValvKeep® data, reports and analysis tools through a secure Internet application (VK-Viewer™)
- Interfaces with Dresser's EVT® (electronic valve tester) and ValScope® to reduce record keeping errors by avoiding re-entry of raw data
- Thorough analysis tools including: Coming Due, Past Due, Compare & Predict Maintenance Intervals and Mean Time Between Failure
- Track and plan future actions via Actions/Remarks

Valve Tag #	Valve Type	Characteristics	Size	Serial #	Manufacturer	Asset	Date Rec'd	Course
FCV0201	Control	PNB	3-1/2	101001	BRIDGEMAN	06	20040101	1
FCV0202	Control	LINEAR	3-1/2	101002	BRIDGEMAN	06	20040101	2
FCV0203	Control	LINEAR	3-1/2	101003	BRIDGEMAN	06	20040101	3
FCV0204	Control	LINEAR	3-1/2	101004	BRIDGEMAN	06	20040101	4
FCV0205	Control	LINEAR	3-1/2	101005	BRIDGEMAN	06	20040101	5
FCV0206	Control	LINEAR	3-1/2	101006	BRIDGEMAN	06	20040101	6
FCV0207	Control	LINEAR	3-1/2	101007	BRIDGEMAN	06	20040101	7
FCV0208	Control	LINEAR	3-1/2	101008	BRIDGEMAN	06	20040101	8
FCV0209	Control	LINEAR	3-1/2	101009	BRIDGEMAN	06	20040101	9
FCV0210	Control	LINEAR	3-1/2	101010	BRIDGEMAN	06	20040101	10
FCV0211	Control	LINEAR	3-1/2	101011	BRIDGEMAN	06	20040101	11
FCV0212	Control	LINEAR	3-1/2	101012	BRIDGEMAN	06	20040101	12
FCV0213	Control	LINEAR	3-1/2	101013	BRIDGEMAN	06	20040101	13
FCV0214	Control	LINEAR	3-1/2	101014	BRIDGEMAN	06	20040101	14
FCV0215	Control	LINEAR	3-1/2	101015	BRIDGEMAN	06	20040101	15
FCV0216	Control	LINEAR	3-1/2	101016	BRIDGEMAN	06	20040101	16
FCV0217	Control	LINEAR	3-1/2	101017	BRIDGEMAN	06	20040101	17
FCV0218	Control	LINEAR	3-1/2	101018	BRIDGEMAN	06	20040101	18
FCV0219	Control	LINEAR	3-1/2	101019	BRIDGEMAN	06	20040101	19
FCV0220	Control	LINEAR	3-1/2	101020	BRIDGEMAN	06	20040101	20
FCV0221	Control	LINEAR	3-1/2	101021	BRIDGEMAN	06	20040101	21
FCV0222	Control	LINEAR	3-1/2	101022	BRIDGEMAN	06	20040101	22
FCV0223	Control	LINEAR	3-1/2	101023	BRIDGEMAN	06	20040101	23
FCV0224	Control	LINEAR	3-1/2	101024	BRIDGEMAN	06	20040101	24
FCV0225	Control	LINEAR	3-1/2	101025	BRIDGEMAN	06	20040101	25
FCV0226	Control	LINEAR	3-1/2	101026	BRIDGEMAN	06	20040101	26

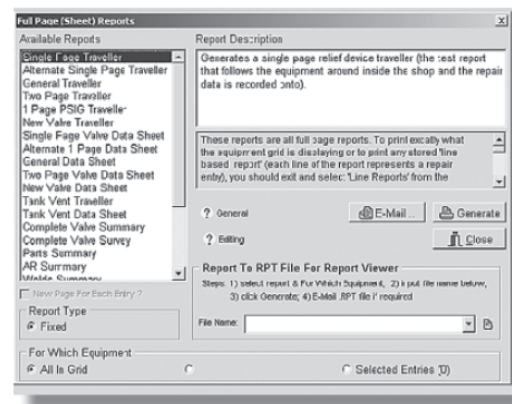
Access to Critical Valve Data

- Valve data
 - Manufacturer, model number, size, materials of construction, tag and serial numbers
 - Shop location, process loop application and factory specifications (set pressure, capacity, lift etc.)
 - Diagnostics data, including test reports from ValScope® and EVT®, and control valve signatures via ValVue®
- Received and pre-test data
- Original nameplate
- Previous repair nameplate
- Cost and repair time
- Next maintenance and frequency data
- Final test data
- Final quality control checklist
- Captures critical dimension inspection
- Capture images of the valve installation, configuration, before and after repair state and the condition of any parts of the valve
- Attach any file to either the valve or a repair. A sizing document, materials information, P&ID, Word file, spreadsheet, etc. can follow the valve from cradle to grave



Automated Standard and Fully Customizable Reports

- Includes many standard forms and reports that users can customize
- Tracks and reports events with details as required
- User can redefine field names and other nomenclature
- Built in import and export features
- End user report editor to create preferred report formats
- Generate PDF reports for easy distribution
- Generate *Data Sheets* to document repairs; *Summary Reports* of repairs, parts in repairs, actions; *Historical Reports* to show complete details of the valve's repair history over the life of the valve; and *more*



Helps to Manage Parts and Spares Inventories

- Parts Wizard with "Heads-up" notification for ordering parts prior to scheduled maintenance
- Manage valves in spares or storage and follow a valve throughout all of its historical physical locations
- Link valves to other equipment including vessels that relief valves are protecting